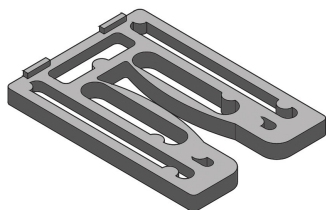
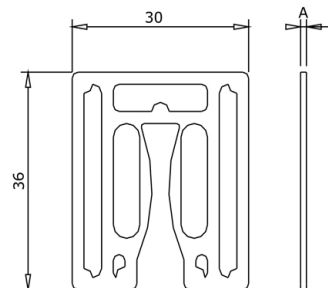
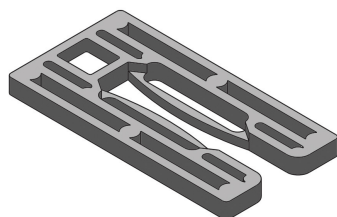
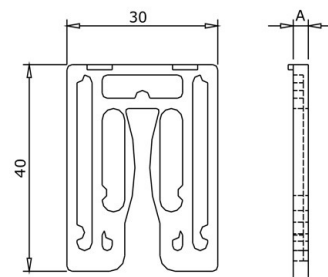


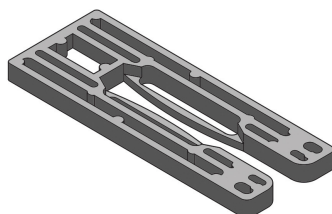
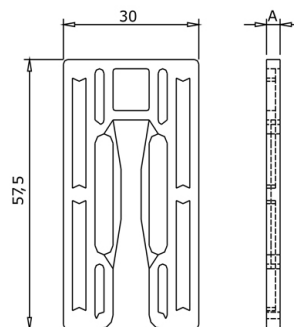
Ref./Code	Espec. / Caract. / Spec.	QTY / GR	
5001/1NAT	A-1mm PP	2500	750
5001/2VE	A-2mm PP	3000	1249
5001/3L	A-3mm PP	2500	1625
5001/5P	A-5mm PP	1500	2770



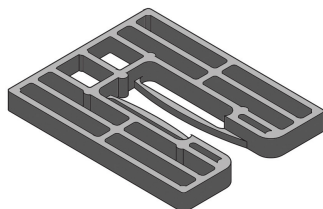
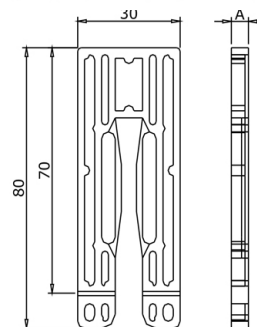
Ref./Code	Espec. / Caract. / Spec.	QTY / GR	
5002/2VE	A-2mm PP	2500	3990
5002/3L	A-3mm PP	2000	4100
5002/4AZ	A-4mm PP	1500	3650



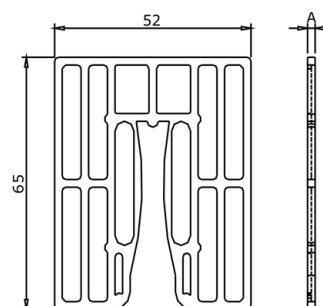
Ref./Code	Espec. / Caract. / Spec.	QTY / GR	
5003/3L	A-3mm PP	3000	8000
5003/4AZ	A-4mm PP	2500	8125
5003/5P	A-5mm PP	2000	7860
5003/1NAT	A-1mm PP	2500	3050
5003/2VE	A-2mm PP	2000	4155

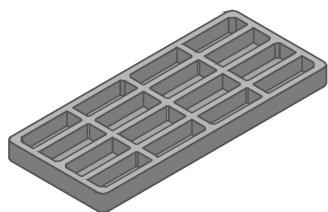


Ref./Code	Espec. / Caract. / Spec.	QTY / GR	
5004/5P	A-5mm PP	1500	9350
5004/1NAT	A-1mm PP	3000	4965
5004/2VE	A-2mm PP	3000	8150
5004/3L	A-3mm PP	2000	7600
5004/4AZ	A-4mm PP	2000	9045

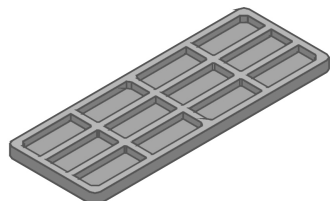
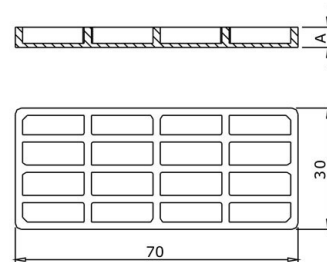


Ref./Code	Espec. / Caract. / Spec.	QTY / GR	
5005/10V	A-10mm PP	750	4525
5005/1NAT	A-1mm PP	1500	1090
5005/2VE	A-2mm PP	1500	5180
5005/3L	A-3mm PP	1250	5535
5005/4AZ	A-4mm PP	1250	6610
5005/5P	A-5mm PP	1000	6280
5005/6A	A-5mm PP	1000	3275
5005/8C	A-8mm PP	750	6800

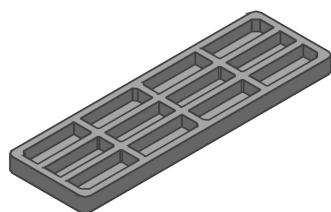
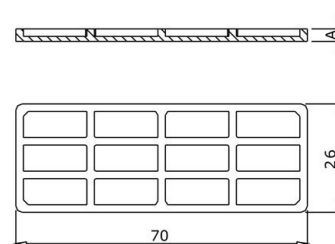




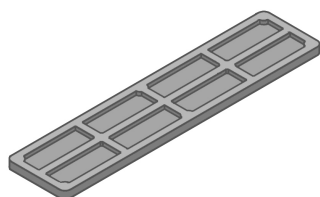
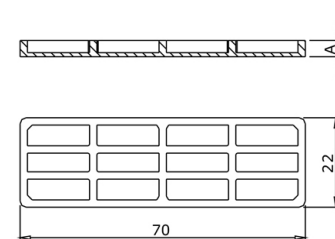
Ref./Code	Espec. / Caract. / Spec.	QTY / GR	
5009/5P	5mm PP	1500	5950
5009/1NAT	1mm PP	2500	4700
5009/2VE	2mm PP	2500	6600
5009/3L	3mm PP	2000	7454
5009/4AZ	4mm PP	2000	8000



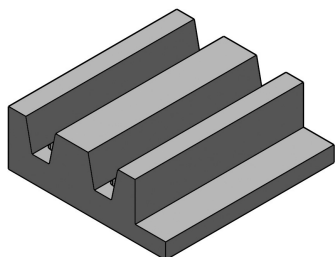
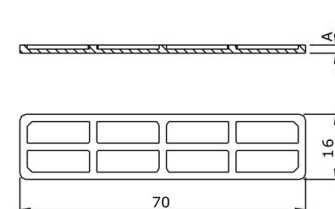
Ref./Code	Espec. / Caract. / Spec.	QTY / GR	
5010/1NAT	1mm PP	3000	5235
5010/2VE	2mm PP	3000	6850
5010/3L	3mm PP	2500	8000
5010/4AZ	4mm PP	2000	7750
5010/5P	5mm PP	1500	6800



Ref./Code	Espec. / Caract. / Spec.	QTY / GR	
5011/2VE	2mm PP	2000	4600
5011/3L	3mm PP	3000	8215
5011/4AZ	4mm PP	2500	8800
5011/5P	5mm PP	2000	8030
5011/8C	8mm PP	1500	9300
5011/1NAT	1mm PP	3000	4600



Ref./Code	Espec. / Caract. / Spec.	QTY / GR	
5012/2VE	2mm PP	2500	4875
5012/3L	3mm PP	2000	8200
5012/4AZ	4mm PP	1500	3705
5012/5P	5mm PP	2500	9000
5012/1NAT	1mm PP	2500	1065



Ref./Code	Espec. / Caract. / Spec.	QTY / GR	
205P	PA 6	2000	1852

