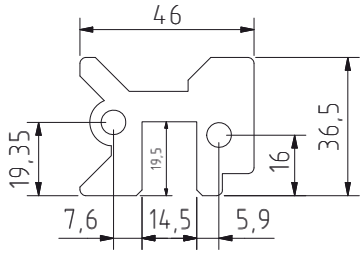
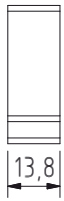
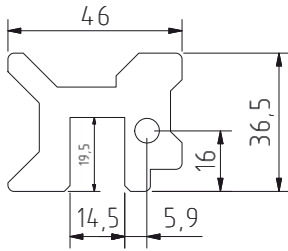


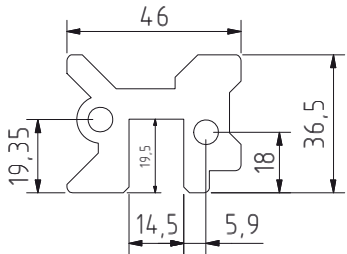
S 11



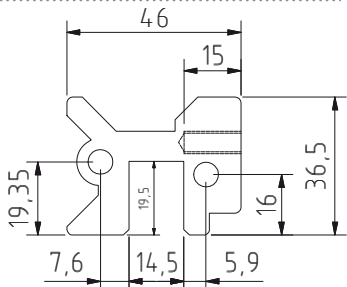
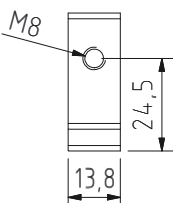
S 9



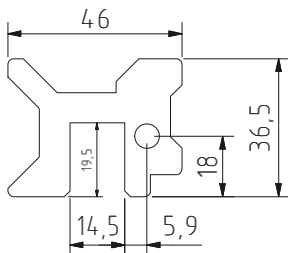
S 8



S 7



S 6

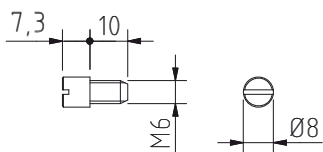


Pernos de ligação incluídos em todos os kits

Connection pins included in all kits

Tornillos de ligación incluídos em todos los kits

Lien boulons compris en tous kits

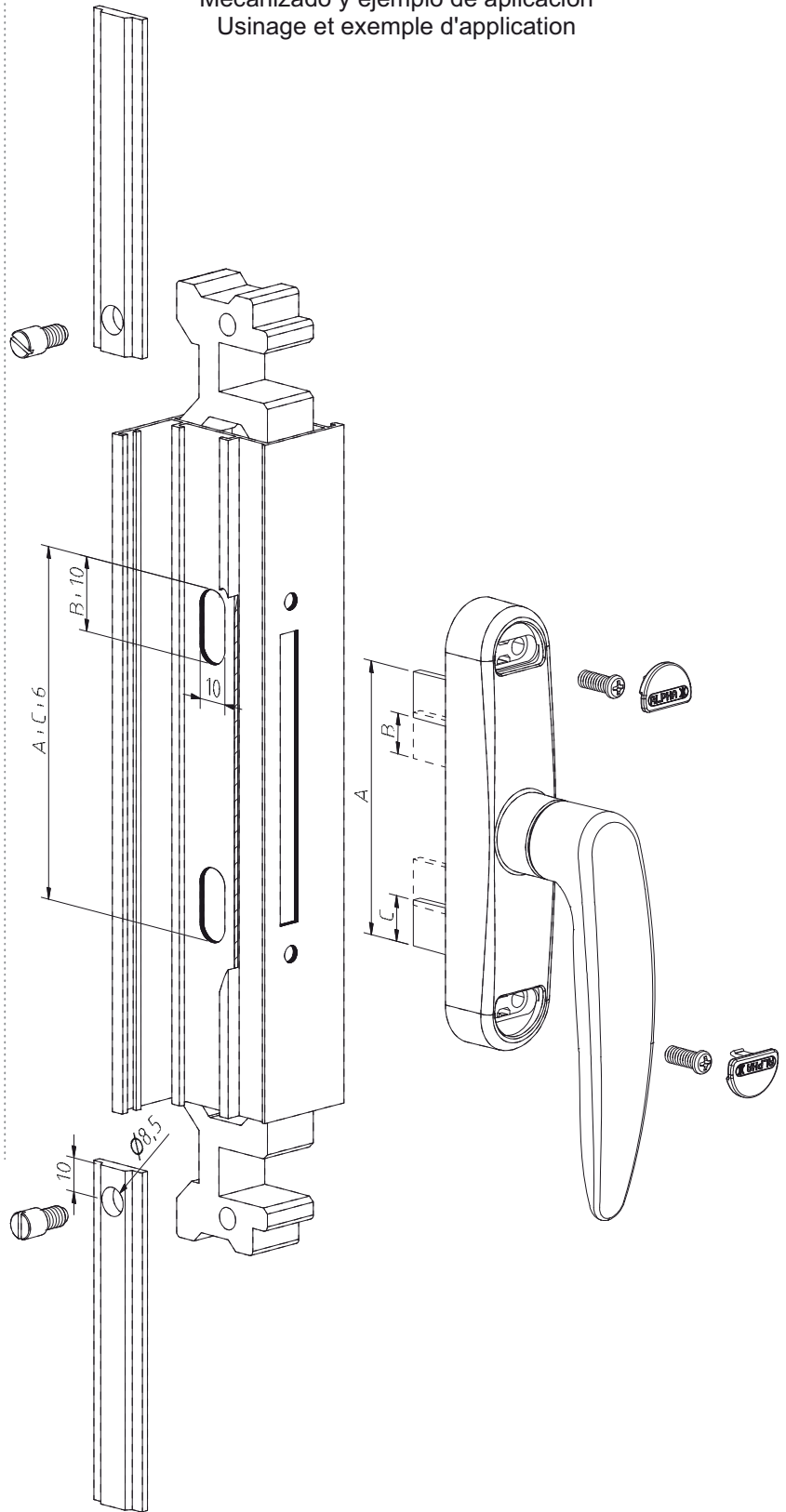


Maquinação e exemplo de aplicação

Machining and application example

Mecanizado y ejemplo de aplicación

Usinage et exemple d'application



Peças # Part # Piezas # Pieces

Pernos de ligação M6x10 inox (S7)

Connection pins M6x10 in stainless steel (S7)
Tornillos de ligación M6x10 de acero inox (S7)
Lien boulons M6x10 en acier inox (S7)

Materiais # Materials # Materiales # Matériels

Nylon reforçado, latão zincado, inox

Nylon reinforced, zinc brass, stainless st
Nylon reforzado, latón zinc y acero inox
Nylon renforcé, laiton zinc et acier inox

Acabamento # Finishing # Acabados # Finitions

Preto natural

Natural black
Negro natural
Noir naturelle

Embalagem # Packaging #
Empaquetado # Emballage



Qty: 40

Observações # Comments # Observaciones # Observations: Cremone não incluída # Cremone not included # Cremone no incluido # Cremone pas compris

Nota: O conteúdo desta folha técnica é puramente informativo. A instalação é feita com total responsabilidade do instalador. The content of this technical sheet is purely informative. The installation is done with total responsibility of the installer.