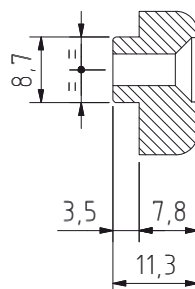
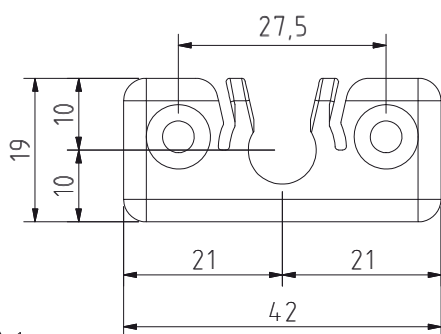
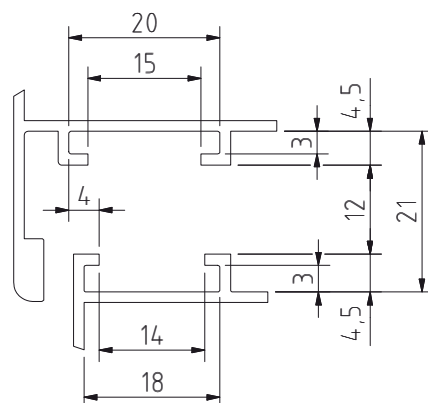
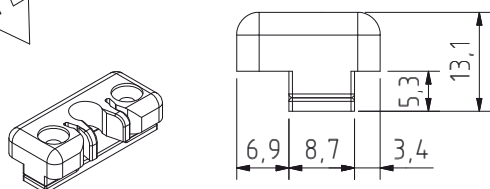
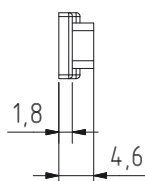
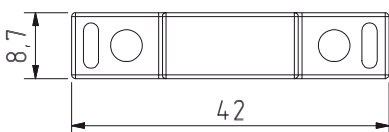
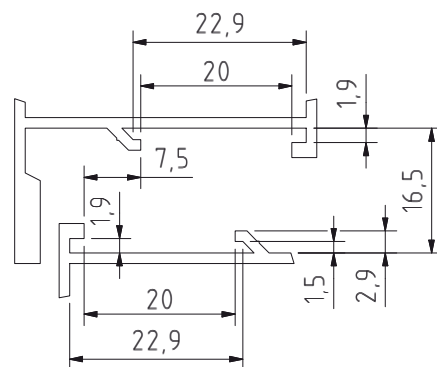


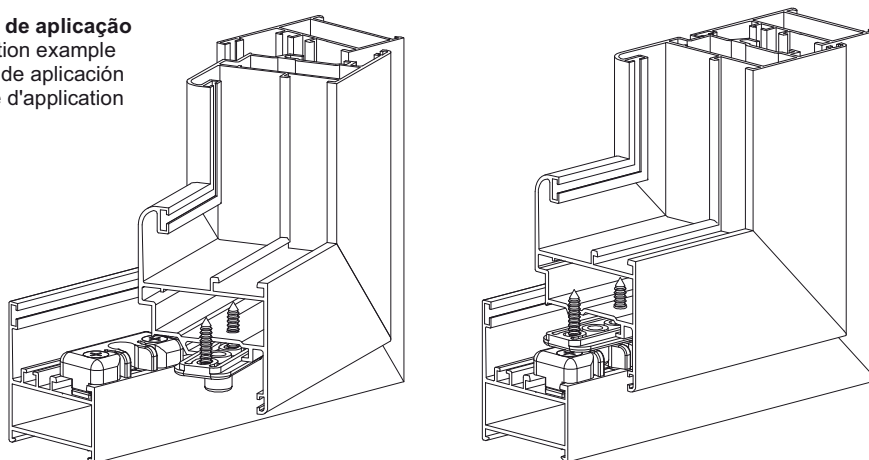
CÂMARA EUROPEIA EUROGROOVE PROFILE



CÂMARA # PROFILE # CAMARA # CHAMBRE



Exemplo de aplicação Application example Ejemplo de aplicación Exemple d'application



Peças # Part # Piezas # Pieces

Parafusos Ø3,9x19 zincados

Zinc steel screws Ø3,9x19
Tornillos de acero zinc Ø3,9x19
Vis en acier zinc Ø3,9x19

Materiais # Materials # Materiales # Matériels

Nylon reforçado e zamak

Nylon reinforced and zamak
Nylon reforzado y zamak
Nylon renforcé et zamak

Acabamento # Finishing # Acabados # Finitions

Preto natural

Natural black
Negro natural
Noir naturelle

Embalagem # Packaging # Empaquetado # Emballage



Qty: 50

Observações # Comments # Observaciones # Observations: Calços incluídos # Wedge included # Suplementos en nylon incluídos # Cales compris

Nota: O conteúdo desta folha técnica é puramente informativo. A instalação é feita com total responsabilidade do instalador. The content of this technical sheet is purely informative. The installation is done with total responsibility of the installer.